

Amelia Birch

UAL Chelsea College of Art and Design

BA Textile Design Portfolio

'Silk Scarves'

About me

Amelia Birch is a Digital Print Designer based in London. Passionate about bold, complimentary colours and symmetrical pattern, she combines these processes into the curation of repeated print designs for fashion and home interiors. Taking inspiration from the natural world, cross-cultural design, and the biomorphism art movement, her work promotes thinking outside the box when it comes to intricate drawings and complex colour combinations. For the initial core focus of her design practice, she has applied these designs to the creation of a series of sustainable Habotai silk scarves.

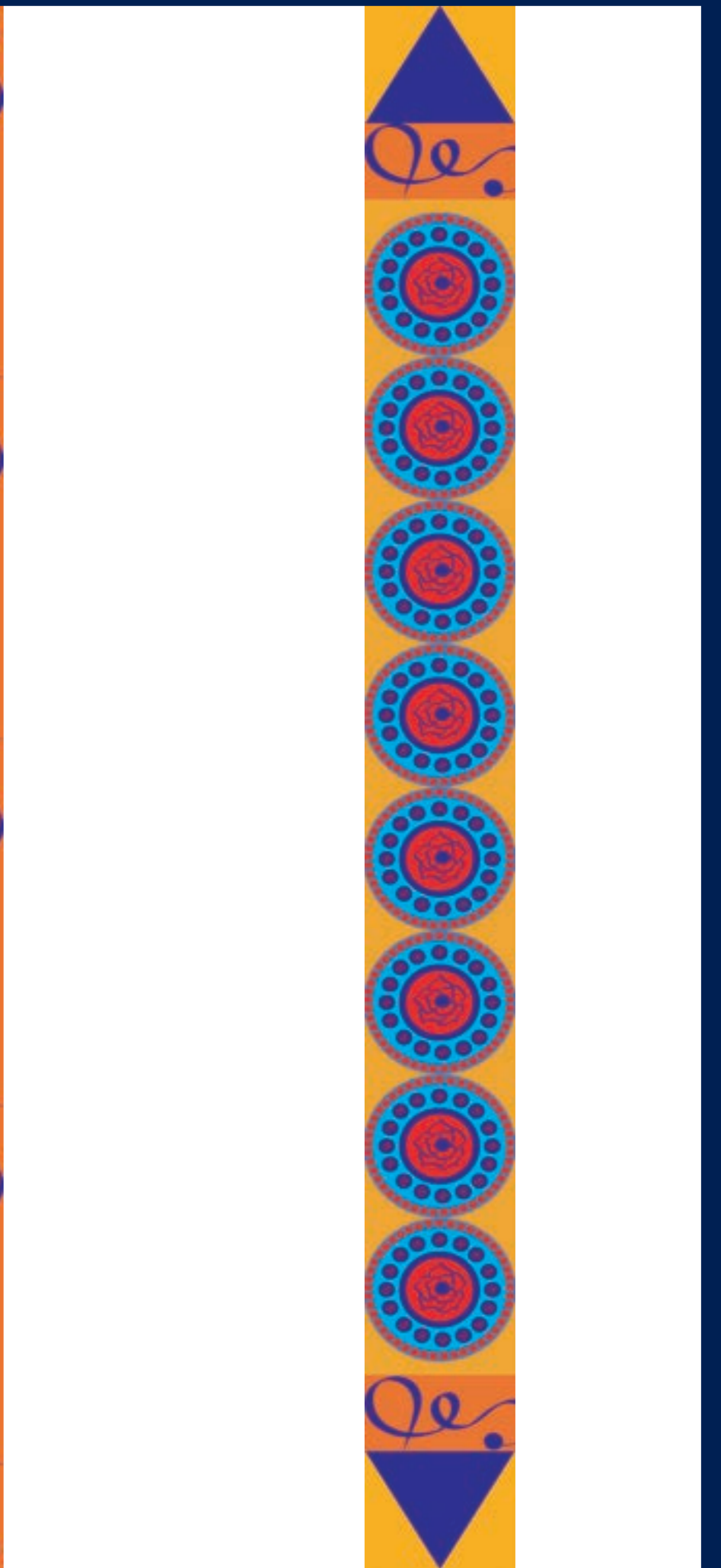
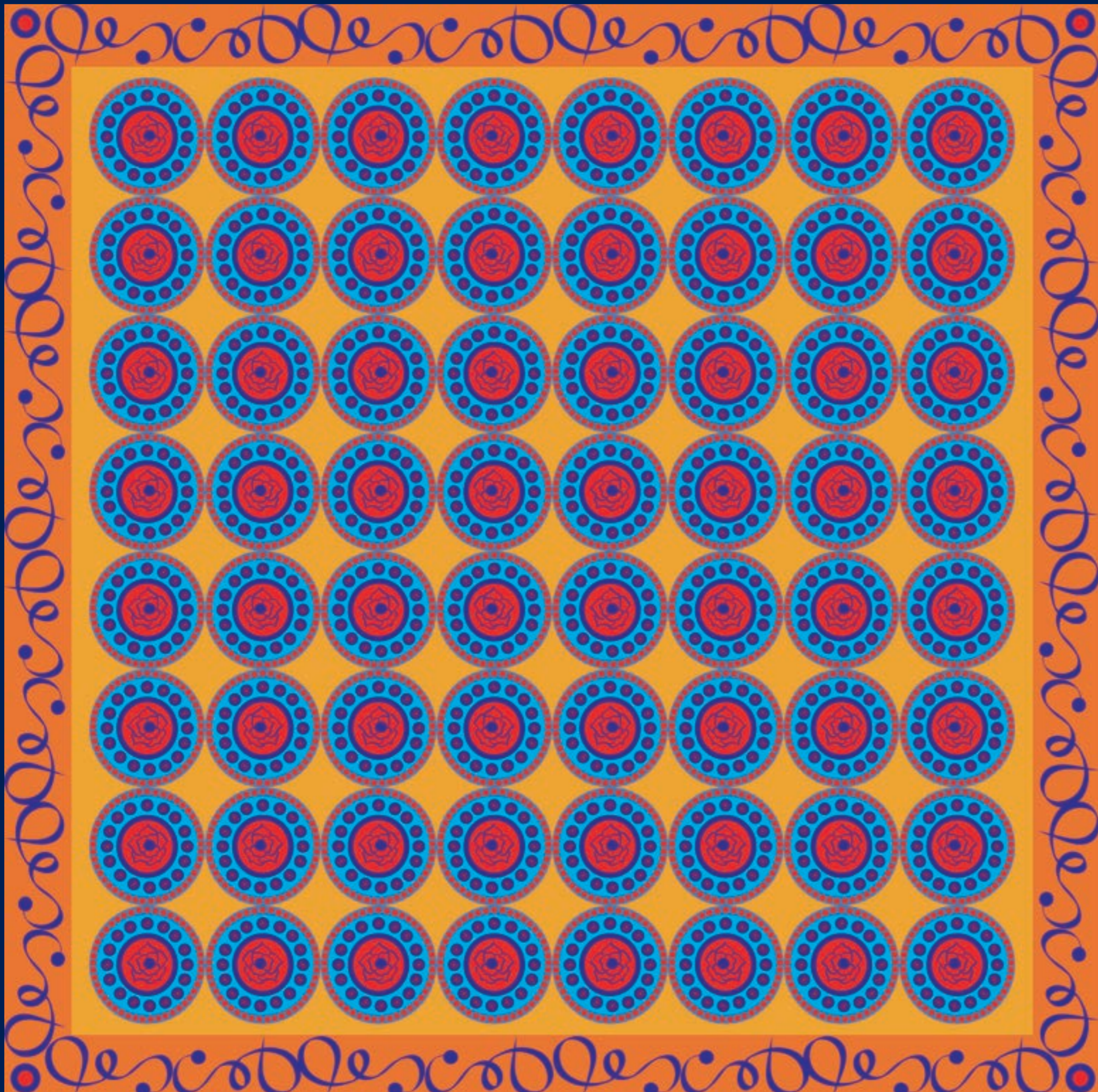
Collection One.
Pattern Derived From Nature

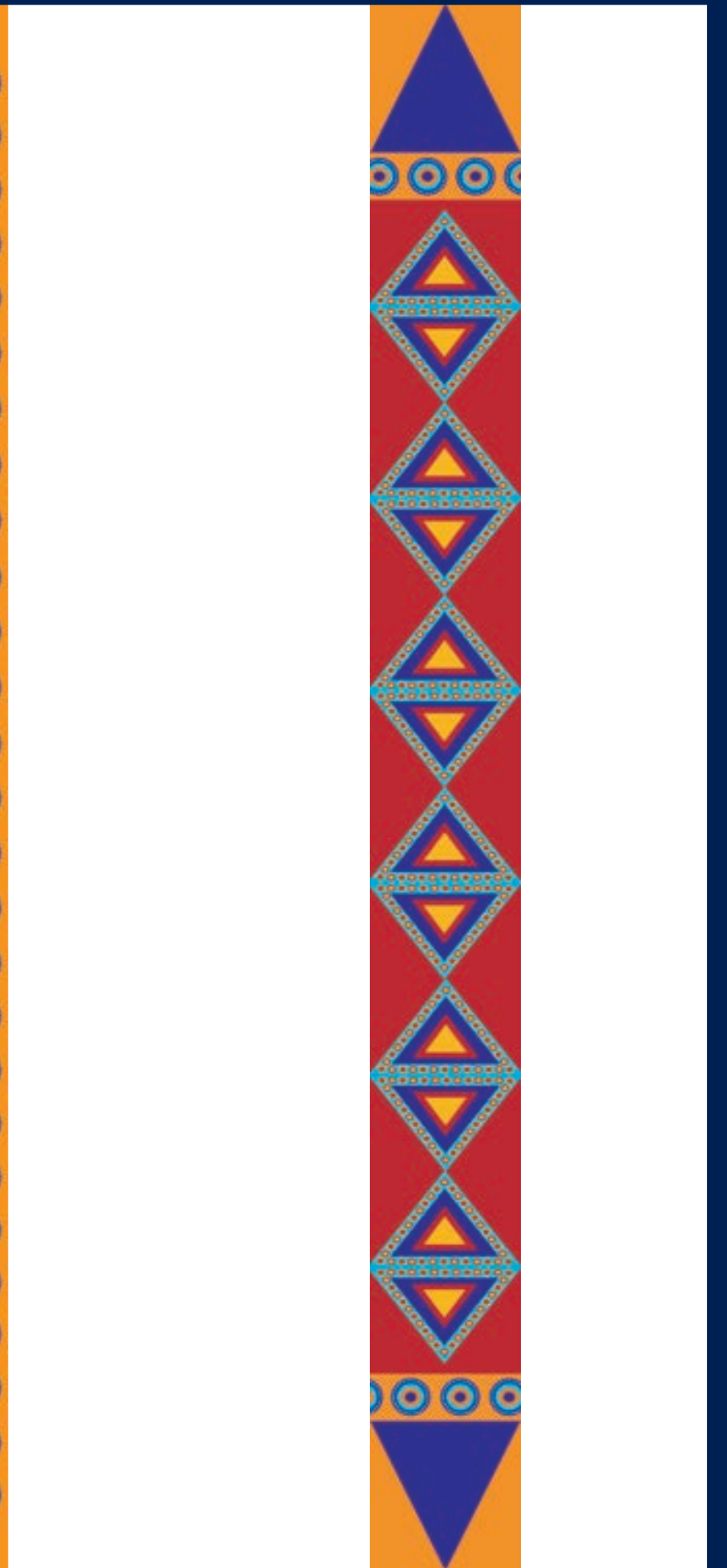
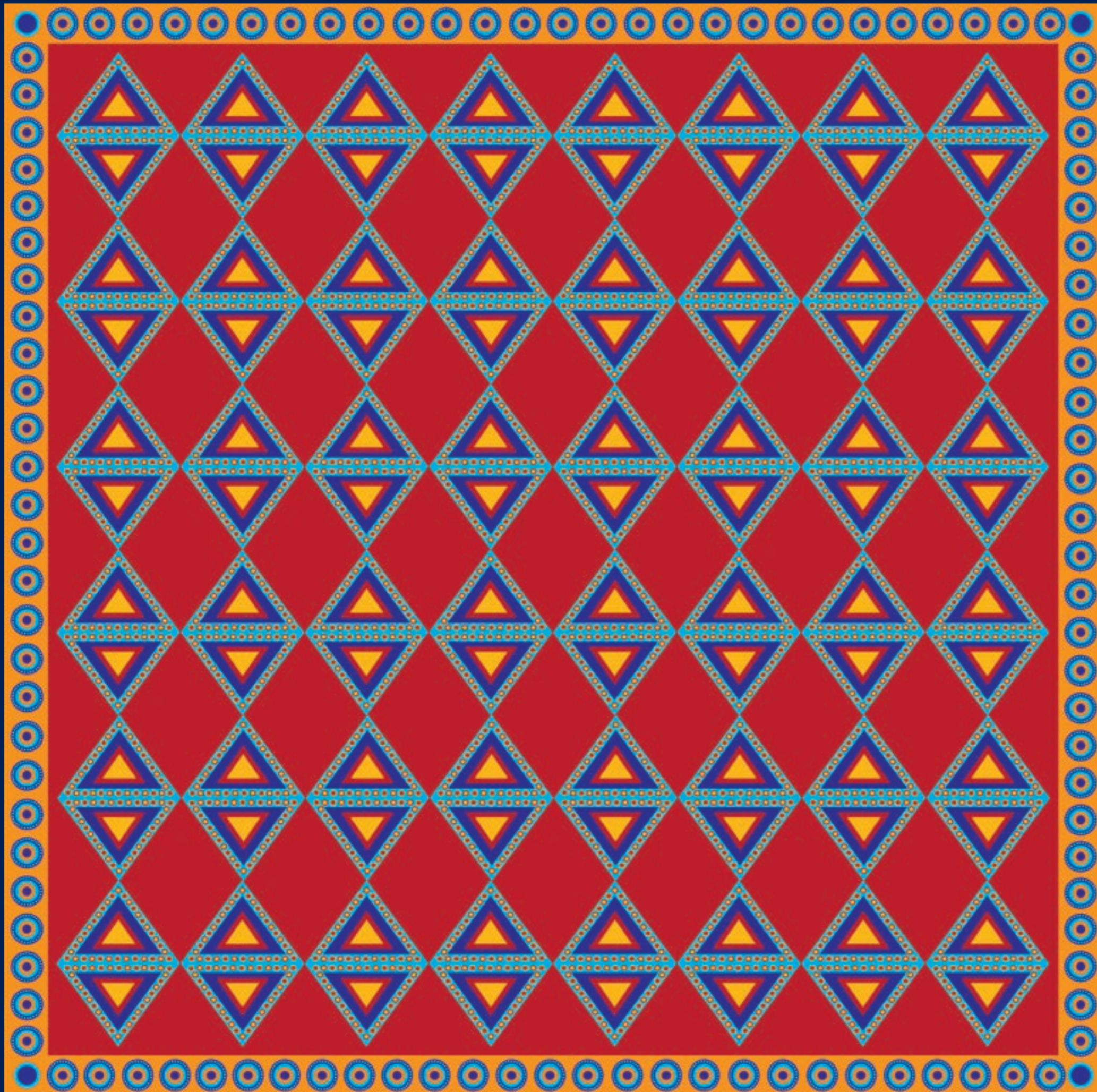
Collection Two.
Pattern In All It's Forms

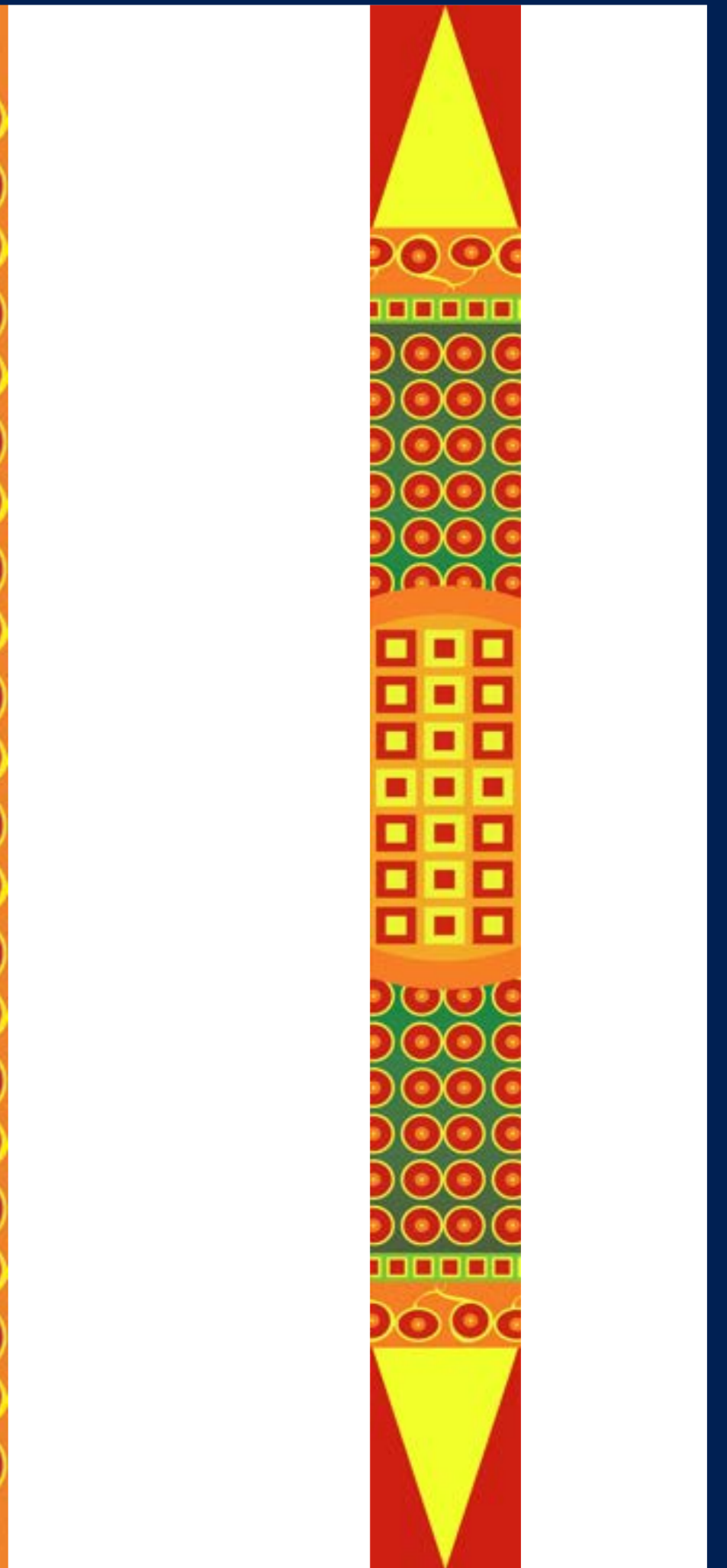
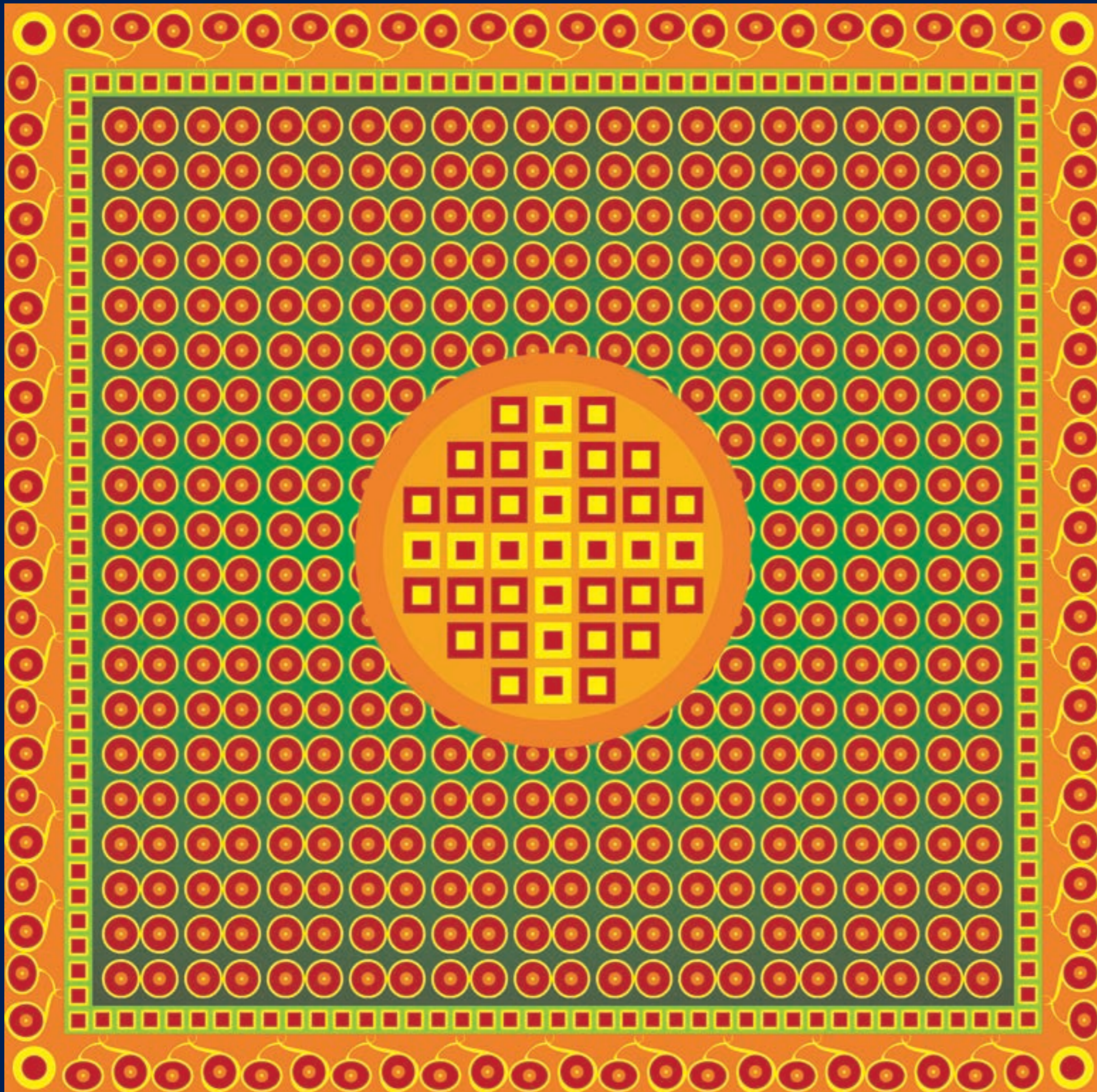
Unit 9

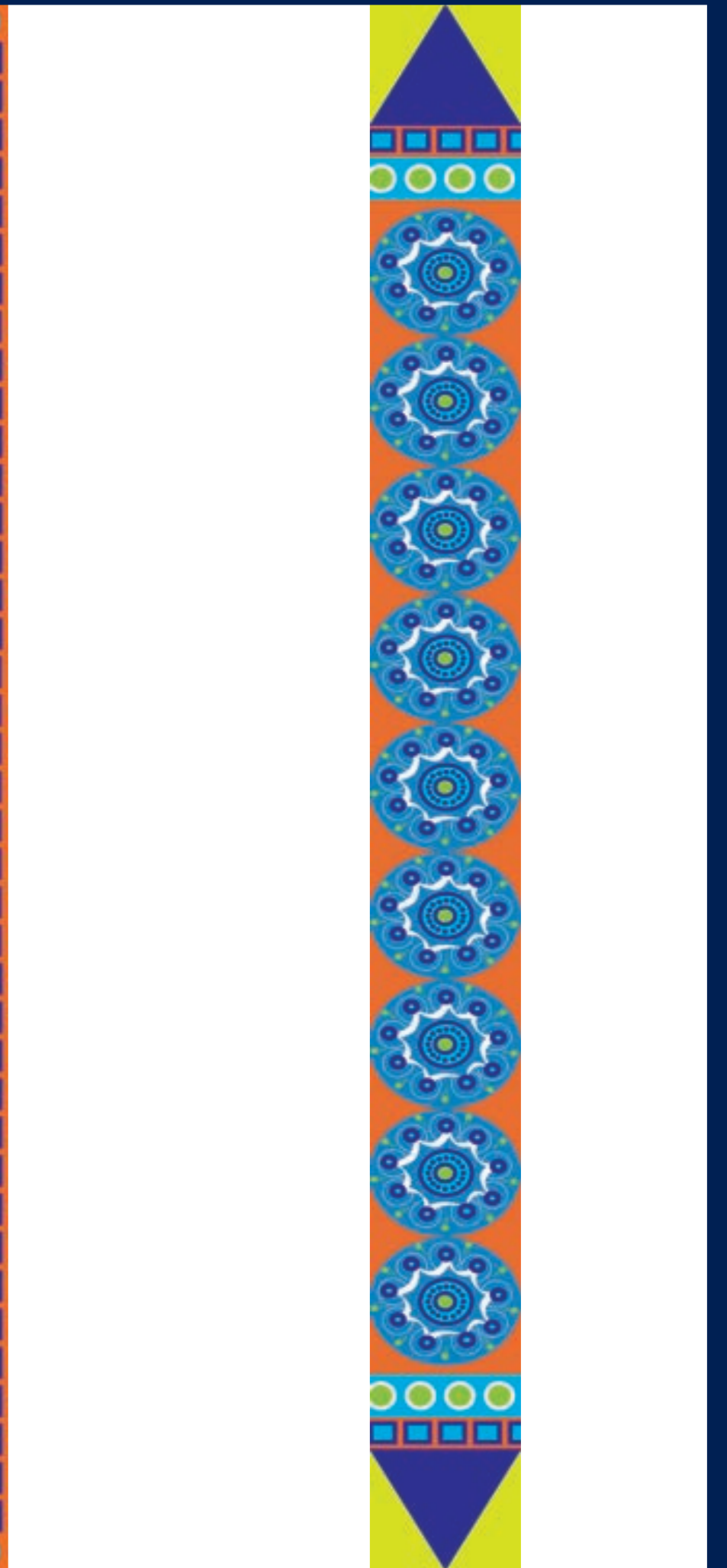
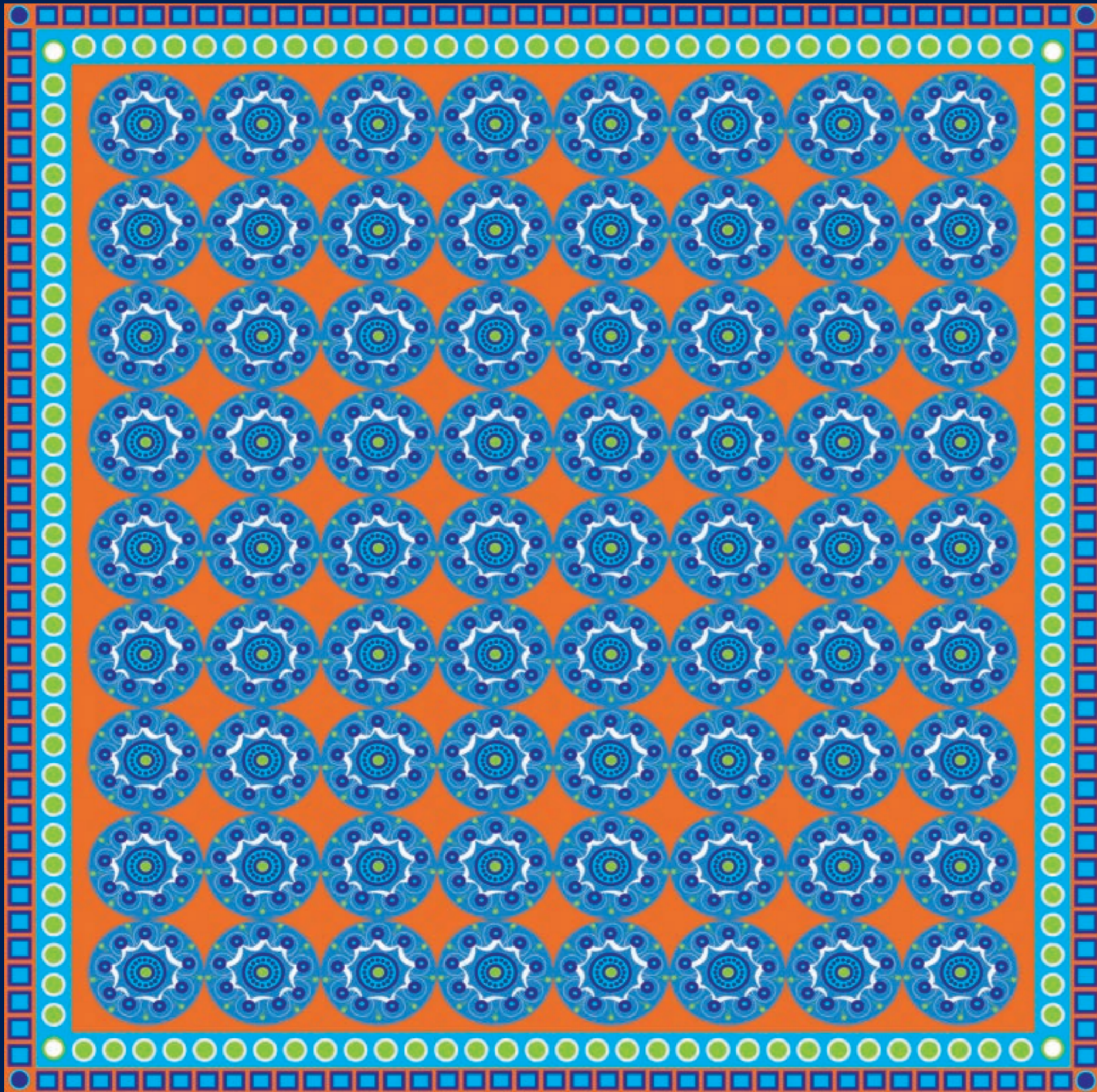
'Pattern Derived From Nature'

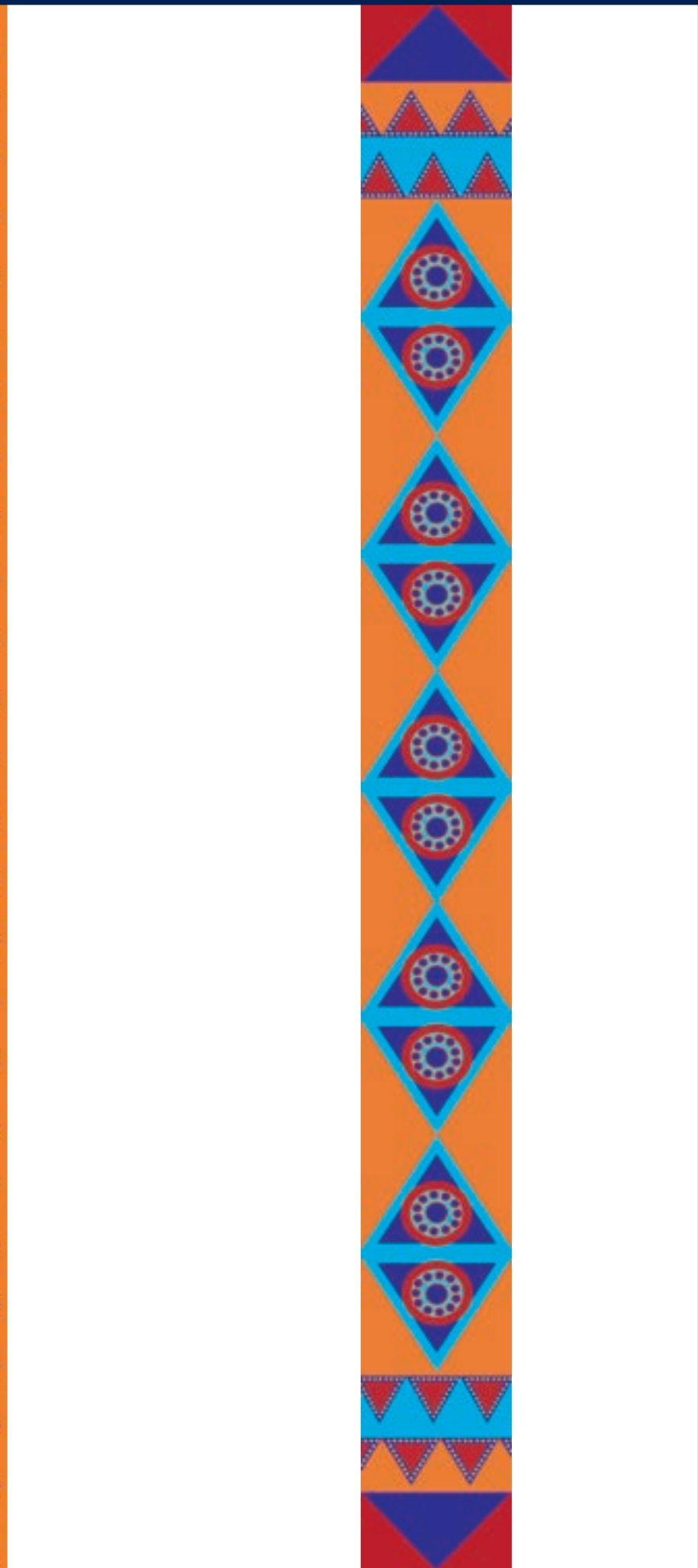
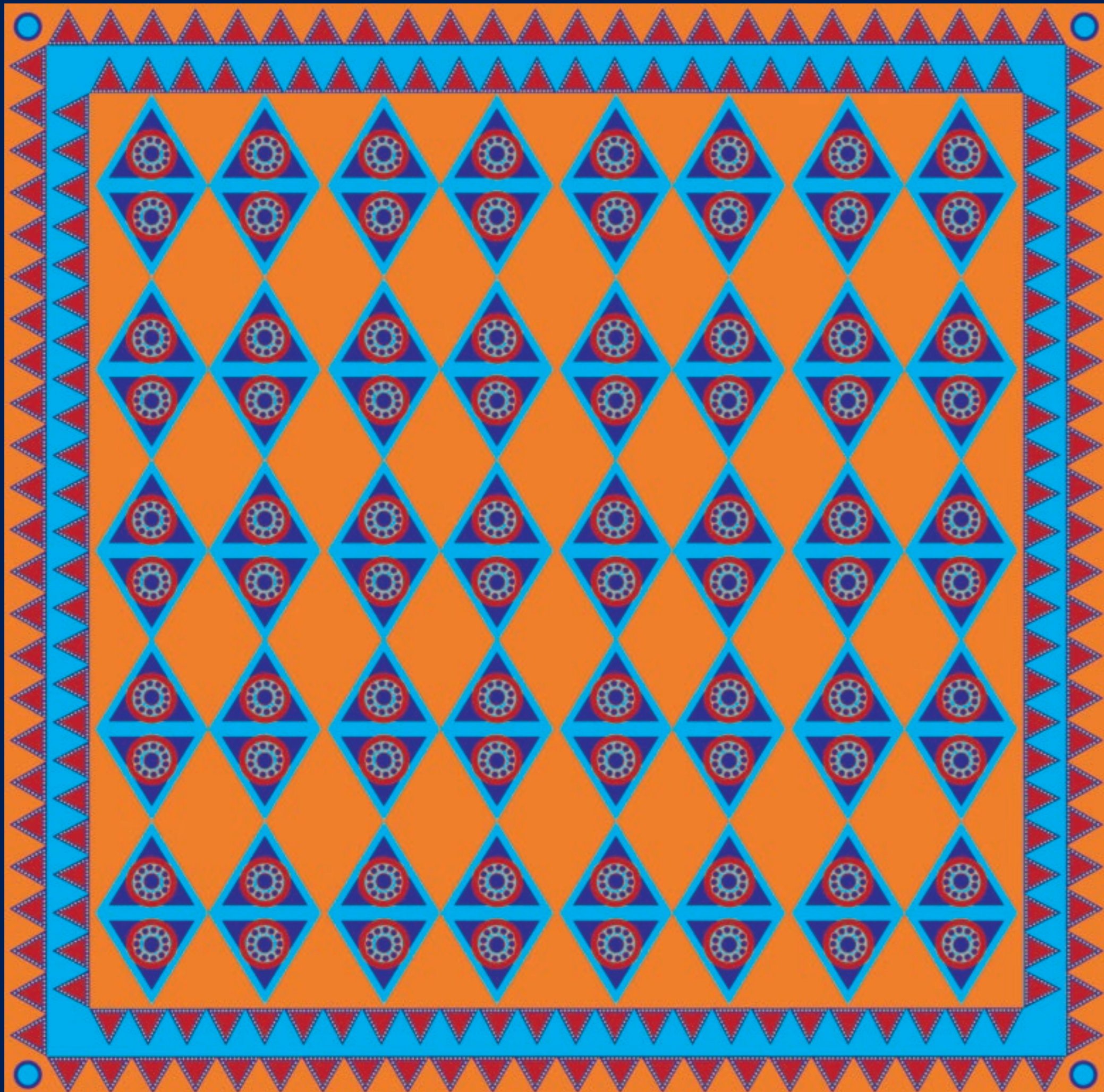
A collection of digitally designed and printed Habotai silk scarves. This project explores the influence of the intricate, symmetrical designs and striking colour combinations seen at all scales in nature.

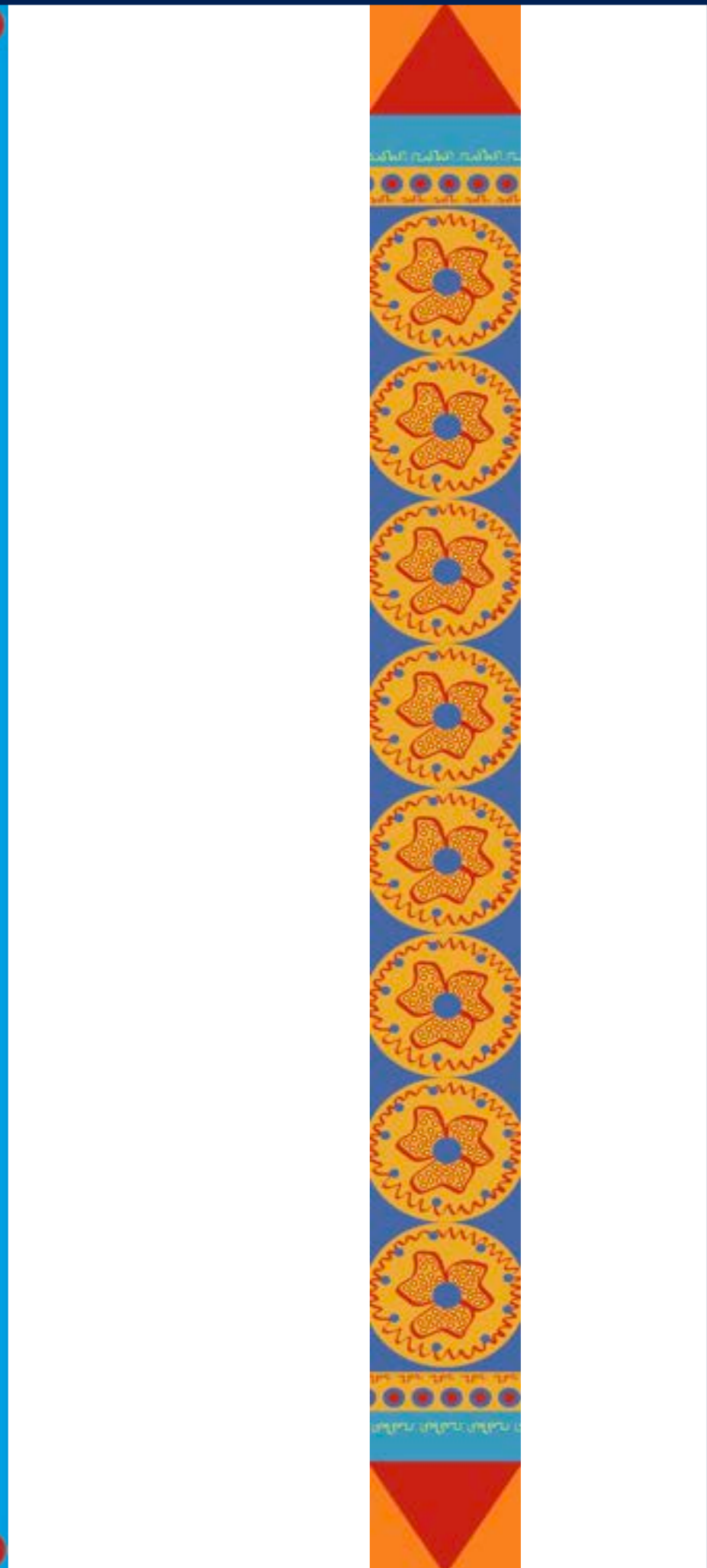
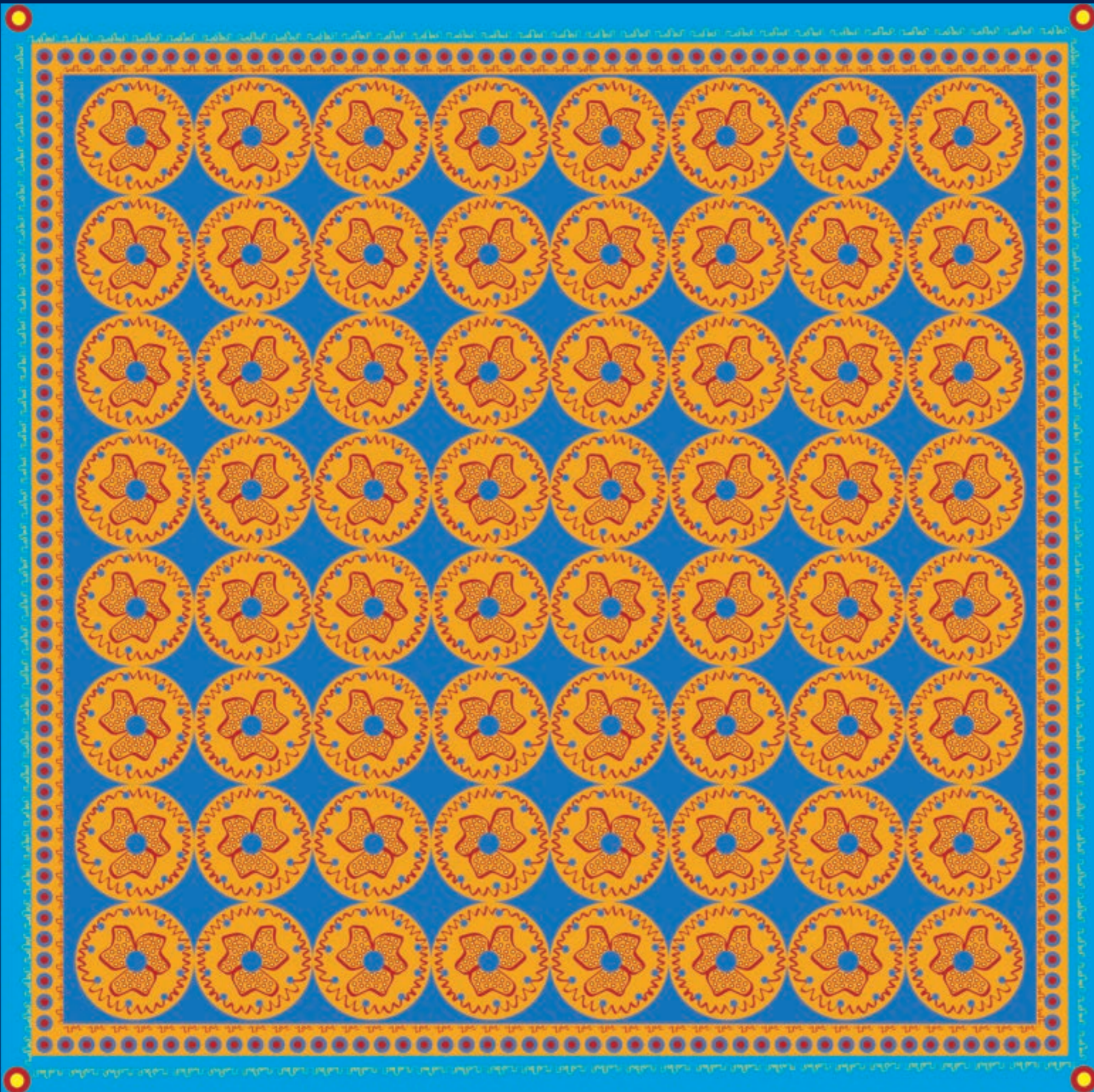


























Unit 10

'Pattern In All It's Forms'

A collection of digitally designed and printed Habotai silk scarves. This project takes initial inspiration from the textiles and architectural influences of Morocco. Aspects of colour and print have been extracted from traditional Zelig designs, with textile processes and digital repeating then being applied to transform these into a signature print.

